

## Multi-purpose mobile research room for Controlled Environment testing

**MyGrowthRoom enables you to carry out your own high-quality product research. Testing varieties, testing to optimize yield, nutritional density, texture and taste. Perform your own tests in an efficient, accurate and flexible way!**

MyGrowthRoom provides you with a complete climate system to accurately control environmental variables. The multi-layer setup facilitates simultaneous tests in uniform conditions. With its flexible interior layout it can be used with a broad range of cultivation and lighting systems.

Our custom-made control system makes it easy to set up, monitor and log plant growth parameters. An efficient, accurate and flexible way to develop optimal growth recipes and light recipes for your crops!



### TESTING AND DEFINING RECIPES FOR YOUR CROPS HAS NEVER BEEN SO EASY!

- What is the best light recipe for a specific crop?
- Which LED solution invokes the optimal plant response?
- How to maximize yield relative to energy used?
- How can I differentiate in taste, colour and texture with my light recipes?
- Does the light output meet manufacturers specifications?
- How do I compare test results for fluorescent and led lights?

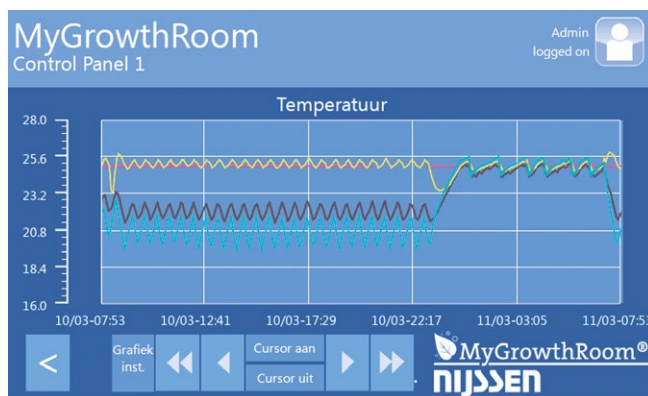
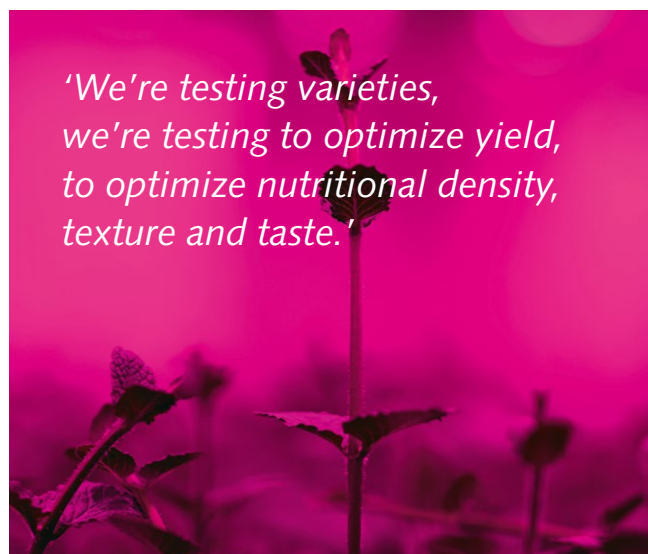
Content with the results of your trial? All settings have been logged and can easily be saved as a growth recipe, for any growth stage, for every variety.



## TECHNICAL SPECIFICATIONS:

- Dimensions (LxWxH)
- External: 4550 x 2800 x 2750 mm
- Growing area: 3000 x 2200 x 2000 mm (fits up to 4 Danish trolleys)
- Temperature range: 15 – 30 °C
- RH range: 55 – 85%
- Flexibility in lighting connections
- Climatized front area with ramp for trolleys

- Fully controllable growing conditions in a clean environment, totally closed to natural light and air
- Suitable for any lighting system
- Fully customizable interior provides maximum flexibility
- Data logging guarantees reproducibility
- One-click definition of growth recipes
- Touch screen control with intuitive and easy to use interface
- Easily portable, it can be positioned anywhere
- Plug & play



*'MyGrowthRoom contains the accumulated knowledge and experience from numerous large-scale projects for renowned research institutes.'*



[www.nijssen.com](http://www.nijssen.com)

Nijssen B.V. • Bio Science Park • Einsteinweg 3, 2333 CC Leiden • Postbus 888, 2300 AW Leiden  
The Netherlands • T +31 (0)71 521 62 14 • E [sales@nijssen.com](mailto:sales@nijssen.com)