

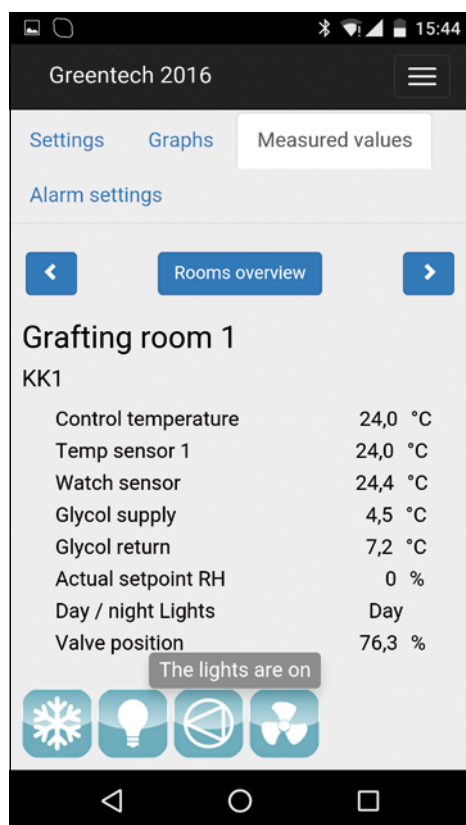
# Climatemaster® web application

## Manage your climate rooms anytime anywhere

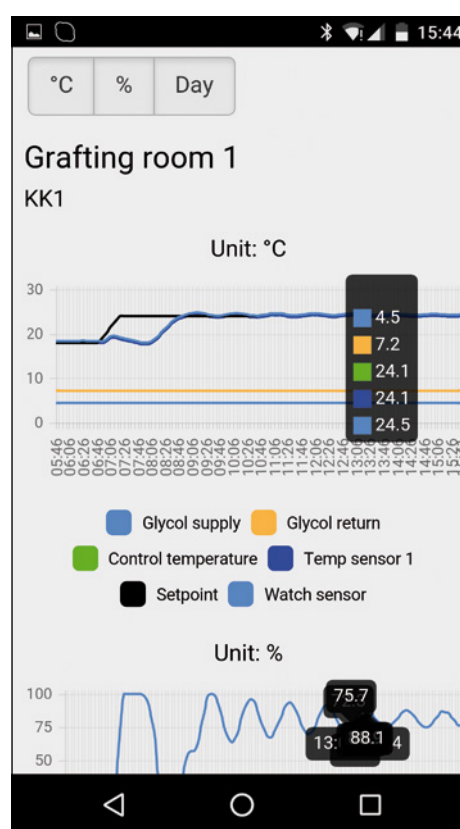
With the internet-based Climatemaster® web application Nijssen provides a control system that allows you to manage your cold stores and climate rooms using any web browser, from anywhere in the world. Using the same intuitive interface as the desktop visualization of the control software.

### 24/7 IN CONTROL

Round the clock remote monitoring is possible with any webabled device (e.g. smartphone or tablet). Internet connection facilitates you to control settings, change configuration parameters, and to receive and follow up alarm notifications.



Measured values

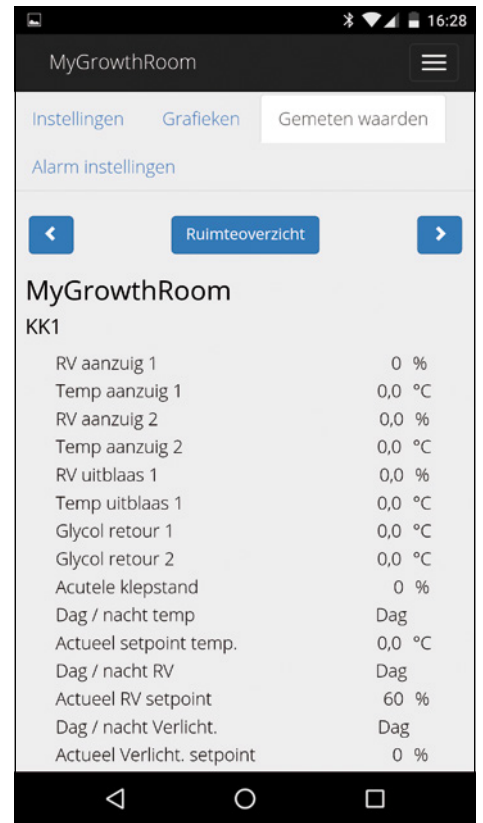
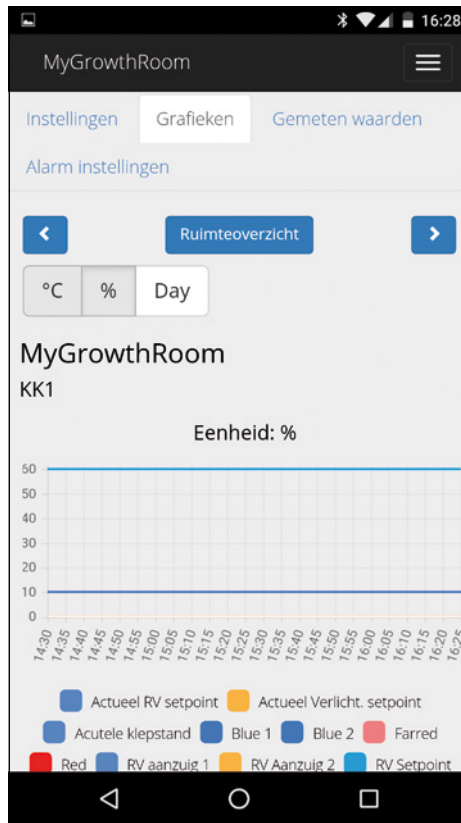
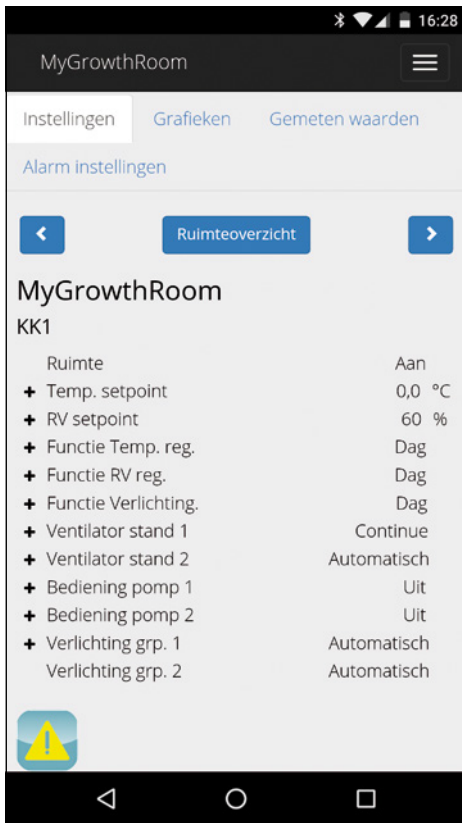


Graphs and alarm settings for each room

### WITH ALL ESSENTIAL FEATURES

Your screen shows a full visualization of the live status, alarms, recent history trend graphs and device settings. Key information is available at a glance, displayed in easy-to-understand charts and tables.

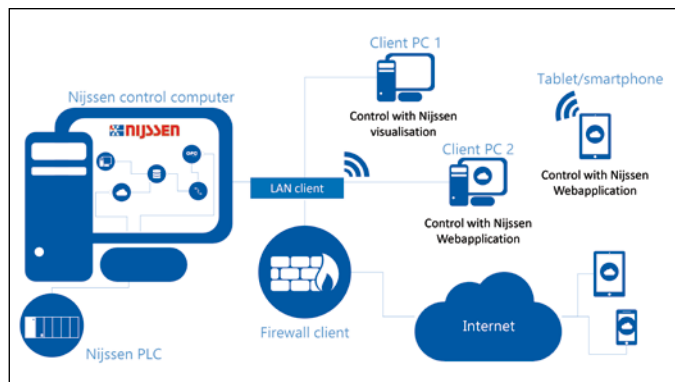
- View and modify all relevant set-points
- View measured values, events and recent trending data
- Receive alarm notifications and follow up alarms



Settings, measured values, graphs and alarm settings for each room

## TAILORED TO YOUR SITUATION

The configuration of the control software will be selected in close cooperation, always customized to your refrigeration system and your IT-infrastructure. Your requirements determine which settings, values and graphs will be available in the web application.



Available with version 2.3 of the Nijssen control systems.

## MULTIPLE ACCESS OPTIONS

Access to the Nijssen control PC can be provided in various ways, suiting the client's IT infrastructure:

- Stand alone control PC
- Extra user PC's via client's LAN
- Mobile devices via client's WiFi
- Internet remote access via client's LAN and firewall.

User access to the web application is authorised via user management in the visualiation module.

The Nijssen Climatedmaster® control system can be seamlessly integrated into the existing IT infrastructure of the customer, e.g.

- Virtualisation of Nijssen control computer within client's infrastructure
- Connection to client's database server and/or webserver
- Integration with building management systems



[www.nijssen.com](http://www.nijssen.com)